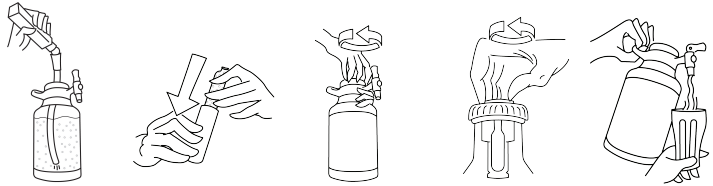


# QUICK START GUIDE



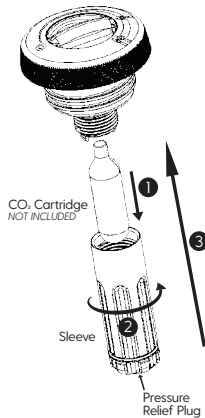
1. Fill clean uKeg
2. Install CO<sub>2</sub> cartridge
3. Screw on cap
4. Turn dial on cap to 1st position
5. Pour and enjoy!

## IMPORTANT

- Do not open sleeve when cartridge contains pressure - turn dial on to empty remaining gas
- Do not use without CO<sub>2</sub> cartridge
- Pressurize immediately after filling, leave pressure on for duration of fill
- Do not pour while uKeg is on its side
- Do not fill with liquid or store uKeg above 120°F
- Do not drop. Contents under pressure
- Excessive suspended particles may lead to tap clogs or leaks

Due to shipping policies, this product does not include CO<sub>2</sub>

## INSTALLING CO<sub>2</sub>



## CAP OPERATION



## TAP FAUCET OPERATION



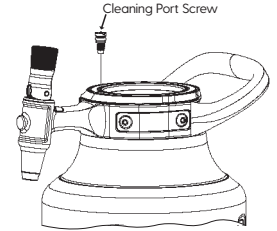
For how-to and maintenance info, please visit: [www.growlerwerks.com/howto](http://www.growlerwerks.com/howto)

# CLEANING

- Handwash only
- Remove cap and rinse uKeg with hot water (120° F max) - For a more thorough cleaning, use a growler cleaning tablet
- Fill with hot water (120° F max), install cap, pressurize, flow at least a pint of water through tap, close tap, turn off cap
- Remove cap, empty bottle and shake with tap open (bottle opening facing downwards)
- Rinse cap and sleeve with hot water (120° F max)
- Allow to dry, store in a dry place with cap off and tap open

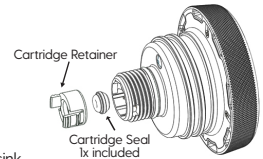
## ADDITIONAL CLEANING (as needed)

- Using a flat-head screwdriver, unscrew cleaning port on top of bottle
- Use a small cleaning brush or pipe cleaner to clean out the dip tube
- Rinse tube and port screw with hot water (120° F max)
- Re-install cleaning port screw



## MAINTENANCE

- Cartridge seal will eventually wear out with use:
  - Always inspect seal for damage before installing CO<sub>2</sub>
  - Replace seal if hissing that does not stop is heard when installing CO<sub>2</sub>
- Debris in the flow path can cause tap leaks, slow flow, or excessive foaming:
  - Follow cleaning procedures
  - Remove cap, then with tap open and holding the uKeg upside-down, run water backwards through the tap using a sink faucet



## WARRANTY

GrowlerWerks warrants that your uKeg™ ("Product") will be free of defects in materials or workmanship under normal home use for one year from the date of receipt of product when purchased from an authorized retailer. GrowlerWerks will, at its option, repair or replace a defective Product without charge to you, including pre-approved shipping costs, provided that we are able to verify that the Product qualifies under this warranty. If determined by GrowlerWerks that replacement of the Product is appropriate to service this warranty, the replacement product will carry the same Limited One Year Warranty from the date of receipt. It is at the discretion of GrowlerWerks to issue new or reconditioned Products as replacement under this warranty, with consideration to the likeness of the product being replaced. Retailers should direct customers with concerns regarding the function of purchased product to GrowlerWerks customer service team for warranty questions.

THIS WARRANTY DOES NOT COVER CONSEQUENTIAL OR INCIDENTAL DAMAGES SUCH AS PROPERTY DAMAGE AND DOES NOT COVER INCIDENTAL COSTS AND EXPENSES RESULTING FROM ANY BREACH OF THIS WARRANTY, EVEN IF FORESEEABLE. Some states or Provinces do not allow the exclusion or limitations of incidental or consequential damages, so the above limitation or exclusion may not apply to you depending on the state or Province of purchase.

For how-to and maintenance info, please visit: [www.growlerwerks.com/howto](http://www.growlerwerks.com/howto)